

Flowfast Kristalina



Description

A decorative, smooth, sparkling methyl methacrylate (MMA) resin floor finish ideal for a modern contemporary environment. Choose Flowfast Kristalina for a combination of functionality and shimmering style.

Flowfast Kristalina has been developed to enable very fast track applications, therefore dramatically reducing down time.

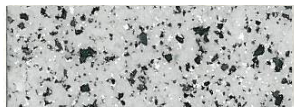
Uses

Ideal for public areas, shops, department stores, restaurants, garden centres, discos, casinos, trendy bars and cafes, museums and art galleries where time for floor repairing and resurfacing is limited.

Benefits:

- Fast curing and rapid installation
- Can be overlaid onto existing ceramic tiles, marble, granite, terrazzo or timber floors
- Glittering attractive floor finish
- Modern and contemporary appearance
- Seamless and hygienic finish
- Hard wearing
- High scratch resistance
- High chemical resistance
- Easy to clean and maintain

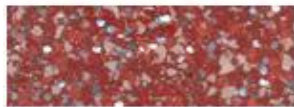
Standard Colour Chart



Dalmatian



Azure Blue



Cranberry



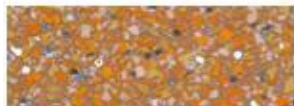
Emerald



Granite



Ebony



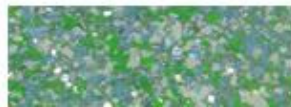
Clementine



Gold



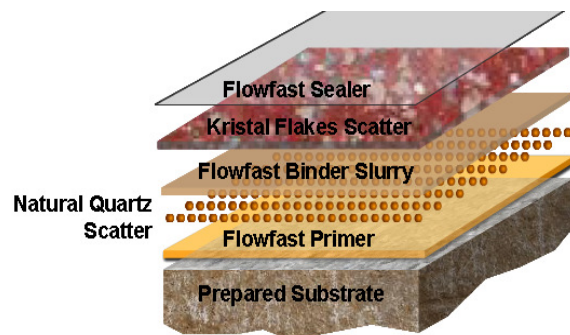
Pacific Blue



Peacock

The applied colours may differ slightly from the examples shown above. Contact our customer services for a true colour sample or a special colour match.

System Design



Model Specification

Product: Flowfast Kristalina system

Finish: Satin

Thickness: Dependant on specification

Colour: _____

Preparatory work and application in accordance with manufacturer's instructions.

Manufacturer: Flowcrete Asia Sdn Bhd

Telephone: Customer Service - +603 6277 9575

Substrate Requirements

Concrete or screed substrate should be a minimum of 25N/mm², free from laitance, dust and other contamination. The substrate should be dry to 95% RH as per BS8204 and free from rising damp and ground water pressure. A special Flowfast primer can be used for substrates up to 100% RH (surface dry).

Products Included in this System

Flowfast Standard Primer

Natural Quartz 0.4-0.8mm

Flowfast Standard Binder Slurry

Flowfast Kristalina Flakes

Flowfast Standard Seal

Consult individual Product Data sheets for information on Flowfast Catalyst levels.

Graded aggregate can be incorporated in the sealer to provide better slip resistance.

Detailed application instructions are available upon request.

Installation Service

The installation should be carried out by a Flowcrete approved applicator with a documented quality assurance scheme. Obtain details of our approved contractors by contacting our customer service team or enquiring via our web site at www.flowcreteaustralia.com.au.

Environmental Considerations

The finished system is assessed as non-hazardous to health and the environment. The long service life and seamless surface reduce the need for repairs, maintenance and cleaning. Environmental and health considerations are controlled during manufacture and application of the products by Flowcrete staff and fully trained and experienced contractors.

Focus on the Floorzone

Flowcrete Asia Sdn Bhd is a division of the Flowcrete Group, world leaders in specialist industrial and commercial flooring. Systems available include: underfloor heating systems, floor screeds, surface damp proof membranes, decorative floor finishes, seamless terrazzo, car park deck waterproofing and corrosion protection systems... to name just a few. Our corporate objective is to satisfy your flooring needs.

Technical Information

The figures that follow are typical properties achieved in laboratory tests at 20 °C and at 50% Relative Humidity.

Slip Resistance	TRRL Pendulum Slip Test Dry >40 Wet depends on specification
-----------------	---

Textured systems are recommended to meet slip resistance value requirements for wet conditions and/or surface contaminants (wet or dry) - please contact our Technical Advisors for further details and specifications

Impact Resistance	ISO6272 1 kg weight >1.8 m 2 kg weight >1.5 m
-------------------	--

Abrasion Resistance	BS 8204-2 Class AR2 – Medium duty industrial and commercial.
---------------------	---

Temperature Resistance	Tolerant of sustained temperatures up to 50°C
------------------------	---

Water Permeability	Nil – Karsten Test (impermeable)
--------------------	----------------------------------

Chemical Resistance	Contact Technical Department Good resistance to tea, coffee, cola, fruit juice, soaps and bleach
---------------------	---

Bond Strength	Greater than cohesive strength of 25 N/mm ² concrete. > 1.5 MPa.
---------------	---

Complies with BS 8204-6/FerFA type 4.

Speed of Cure (per coat)

Full traffic	1 hour
Full chemical cure	1 hour

Cure at ambient temperatures in the range 0°C to 30°C can be achieved by altering the quantity of catalyst used. For applications below 0°C, please consult our Technical Department.

Aftercare - Cleaning and Maintenance

Clean floors regularly using a rotary scrubber in conjunction with a mildly alkaline detergent (without solvent).

Important Note

Flowcrete's products are guaranteed against defective materials and manufacture and are sold subject to its standard Terms and Conditions of Sale, copies of which can be obtained on request.

Further Information

To ensure you are specifying a fit for purpose flooring system for your project please consult our Technical Advisors on the number below or visit our website to register your interest in specifying one of the most durable floors on the market.

Flowcrete Australia Pty Ltd

Brisbane Office (Regional)

PO Box 817

Nundah QLD 4012

Tel: +61 7 3205 7115

Fax: +61 7 3205 3116

Email: australia@flowcrete.com

Flowcrete Australia is an RPM company

Sydney Office

Unit 4/24 Anzac Avenue

Smeaton Grange NSW 2567

Tel: +61 2 4648 0397

Fax: +61 2 4648 0719