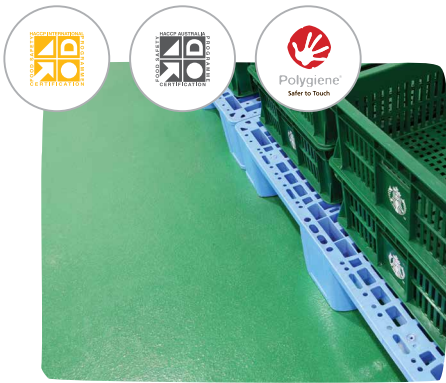








CONTACT OUR
 EXPERT TEAM
 TODAY!



**HACCP INTERNATIONAL
 CERTIFIED ANTIMICROBIAL
 CEMENTITIOUS POLYURETHANE**



Flowcrete Australia's HACCP International and ISO 22196 certified cementitious polyurethane flooring materials have been evaluated through third party testing methods for physical, chemical and microbiological food safety risks and classified as food-safe for use in wet and dry processing areas.

-  Contains a silver-ion antimicrobial, Polygiene®
-  Positively textured profile to minimise slip risks
-  Allows safe transmission of water vapour from the slab below
-  Protects against chemicals, fats, hot oils, sugar and acids
-  Resistant to intermittent temperatures of up to 120°C
-  Minimal surface joints ensure the floor is easy to clean

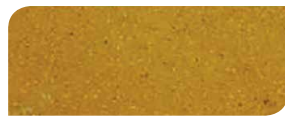
FLOWFRESH

COLOUR GUIDE

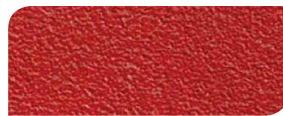
The new easy-to-clean gloss finish was designed to improve aesthetics in food and beverage environments whilst maintaining the key performance features.



Rich Cream



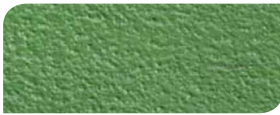
Warm Buff



Tile Red



Clay



MF Green



Blue



Ash Grey



Pewter Grey

Flowfresh Coating is now available in both Matte and Satin finishes in a range of bold colours



Rich Cream



Warm Buff



Coral Red



Clay



Signal Green



Blue



Ash Grey



Pewter Grey

*Light colours may require additional coats to achieve desired results.
 **Flowcrete assumes no responsibility for the application of incorrect colour.
 ***It is recommended that top coat colours match base coat colours to achieve desired results.