

Mondéco Rapide (8mm)

Is an innovative, rapid curing, seamless, resin-based decorative terrazzo floor finish which features Australian marble aggregates.

Typically used in high-end commercial developments, airports and shopping centres.



Flexible Design:

Offers extensive design potential to deliver the wow-factor underfoot.



Rapid Installation:

Quick curing properties reduce downtime during installation.



Versatile:

Can be overlaid onto tiles making it ideal for refurbishments.



Aesthetically Attractive:

Features local Australian marble chip aggregates that provide a luxury finish

Technical Profile

FIRE RESISTANCE - AS/ISO 9239.1

CHF Value	5.7 kW/m ²
-----------	-----------------------

Smoke Value	<4 % (Mean)
-------------	-------------

SLIP RESISTANCE

Method described in AS4586-2013	Dry & Wet Rating is dependant on specification (in accordance with AS4586-2013)
---------------------------------	---

The slipperiness of flooring materials can change significantly, due to the installation process, after short periods of use, due to inappropriate maintenance, longer-term wear and/or surface contaminants (wet or dry).

Textured systems are recommended to meet slip resistance value requirements for wet conditions and/or surface contaminants (wet or dry) - please contact our Technical Advisers for further details

TEMPERATURE RESISTANCE

Tolerant of sustained temperatures up to 60°

WATER PERMEABILITY

Karsten Test	Nil (Impermeable)
--------------	-------------------

CHEMICAL RESISTANCE

Contact Technical Department

IMPACT STRENGTH

ISO 6272-1	10 Nm
------------	-------

WEAR RESISTANCE

EN 13892-4	Max. wear depth < 5µm
------------	-----------------------

BOND STRENGTH

ASTM D4541 (Pull-Off Test)	> 1.5MPa*
----------------------------	-----------

SPEED OF CURE**

Light Traffic	1hr
---------------	-----

Full Traffic	2-3hrs
--------------	--------

Full Chemical Cure	2-3hrs
--------------------	--------

These figures are typical properties achieved in laboratory tests at 20°C and at 50% Relative Humidity. Textured systems are recommended to meet slip resistance value requirements for wet conditions and/or surface contaminants (wet/dry). Please contact our Technical Advisers for further details.

*Assume concrete or substrate is a minimum of 25 N/mm².



White



Off White



Warm White



Pastel Grey



Mist Blue



Glacier

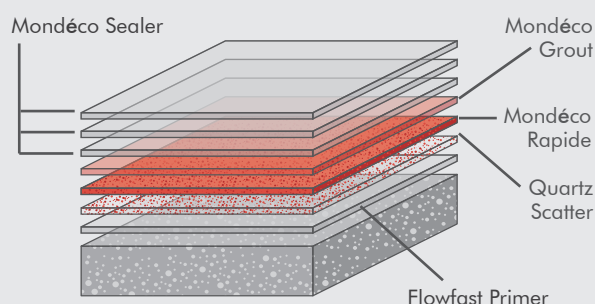
The applied colours may differ from the examples shown.
For a full colour chart and samples, contact your local Flowcrete office.

Model Specification

System	Mondéco Rapide
Finish	Semi Gloss / Gloss
Thickness	Applied at 10mm, (ground down to 8mm).
Manufacturer	Flowcrete Australia Pty Ltd
Contact:	+61 7 3205 7115

Preparatory work and application in accordance with manufacturer's instructions.

System Design



Products Included In This System

Layer 1	Flowfast Primer
	Quartz 8/16 Mesh Scatter
Layer 2	Mondéco Rapide
Layer 3	Mondéco Grout
Layer 4	Mondéco Sealer
Layer 5	Mondéco Sealer
Layer 6	Mondéco Sealer

Coving

Coving can form an integral part of the flooring system. It creates a sealed finish between the floor and wall joint. Please refer to Flowtex F1 Coving Mortar for further information.

Substrate Requirements

Concrete or screed substrate should be a minimum of 25 N/mm², free from laitance, dust and other contamination. Substrate should be dry to 75% RH as per ASTM F2170 (AS1884:2012).

Installation Service

The installation should be carried out by a qualified contractor with a documented quality assurance scheme. For details of our recommended contractors, contact your local Flowcrete office. Detailed application instructions are available upon request.

Environmental Considerations

The finished system is assessed as non-hazardous to health and the environment. The long service life and seamless surface reduce the need for repairs and maintenance. Environmental and health considerations are controlled during manufacture of the products by Flowcrete staff.

After-care, Cleaning & Maintenance

Clean regularly using a single or double headed rotary scrubber drier in conjunction with a mildly alkaline detergent. Please refer to Flowcrete's Cleaning & Maintenance Guide for further information.

Warranty

Flowcrete products are guaranteed against defective materials and manufacture and are sold subject to our standard 'Warranty, Terms and Conditions of Sale', copies of which can be obtained on request. Warranty does not cover suitability, fit for purpose or any consequential or related damages. Please review warranty in detail before installing the products.

Method Statement

System	Mondéco Rapide
Specification	Smooth Finish

This specification assumes a concrete compressive strength greater than 25 N/mm², application and curing temperatures of 10–35°C, the presence of an effective damp proof membrane below substrate and concrete moisture content less than 75% RH. If moisture content is above 75% RH, please contact Flowcrete Australia.

This specification must be read in conjunction with relevant product technical data sheets and the application of all materials is to be strictly in accordance with manufacturer's instructions.

Manufacturer	Flowcrete Australia Pty Ltd
Address	HQ - Unit 2, 41 Deakin Street
Suburb	Brendale
State	QLD
Postcode	4500
Telephone	+61 7 3205 7115
Email	australia@flowcrete.com

Outline for Installation

Mechanically Prepare Substrate	
Apply Flowfast Primer	@ 0.35-5kg/m ²
Apply 8/16 Mesh Sand Scattered	@ 0.1kg/m ²
Apply Mondéco Rapide	@ 24kg/m ²
Apply Mondéco Grout	@ 0.1kg/m ²
Apply Mondéco Sealer	Min 3 Coats

Storage

12 months in an unopened packaging stored at a temperatures of 5-40°C.

Protect from frost, weather, moisture and contaminant ingress.

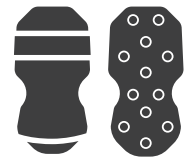
Application Equipment

The use of correct application equipment is critical as incorrect application tools can result in poor finishing and incorrect material consumption. Always test the application equipment prior to commencing work.

The following equipment is recommended for this application.



10-12mm Nap Roller
Cover - Lambswool
*Rolana or Equivalent



Spike Shoes



Slow Speed Drill with
Helical Mixer Head



Pin Rake



Plastic / Steel Trowel



Screed Bar



Plastic / Steel
Spatula

Safety Precautions

Wear appropriate Personal Protective Equipment (PPE) including masks, gloves, eye protection and protective clothing during mixing and application. Ensure the working area is well ventilated and follow the appropriate Health and Safety guidelines applicable to the location where the application is undertaken.

Material Set-Up

Before commencing work ensure that your material is set-up by separating all components (e.g. Base A, Hardener B, Filler C etc.) to ensure that all material is correct. Check product labels and ensure there are equal amounts of product.

Site Set-Up

Before commencing work ensure that your site is set-up. Mark the floor according to the specification with masking tape or similar to clearly identify what area (m²) each unit will cover. If this is not achieved (greater or less consumption than the specified amount) immediately stop and contact Flowcrete.

Surface Preparation

Surface preparation is to be completed by totally enclosed (light shot blasting) or coarse diamond grinding. All cementitious laitance must be removed to expose a sound substrate and provide a dry, dust free, open textured surface. All hard to reach areas and areas around the perimeter must be prepared using hand held preparation equipment.

Any damaged areas must be repaired with Flowfast F1 mortar. Consult Flowcrete prior to using an alternative repair mortar. Any rough or uneven areas must be made smooth with Flowfast SC (Flowfast Primer, Flowfast Binder, Sand/Flour). Consult Flowcrete prior to using an alternative MMA scratch coat.

Application of Flowfast Primer

The substrate must be surface dry before the application of Flowfast Primer.

1. Mixing

Thoroughly mix the resin with a slow speed drill and helical spinner and mix for 30 seconds. Then add catalyst and mix for a further 30 seconds.

2. Application

Immediately after mixing, apply the Flowfast Primer by roller ensuring an even consistent film is achieved. Apply 8/16's mesh quartz sand whilst the Flowfast Primer is wet and allow to become tack free.

Application of Mondéco Rapide

The substrate must be surface dry before the application of Mondéco Rapide. Mondéco Rapid should be applied immediately after Flowfast Primer has cured.

1. Setting Out

Mark/grid the floor to highlight what each individual mix should cover using masking tape or similar. If this is not achieved (greater or less consumption than the specified amount) immediately stop and contact Flowcrete.

2. Mixing

Thoroughly mix the resin, add pigment and mix for 30 seconds with a slow speed drill and helical spinner. Then add catalyst and mix for a further 30 seconds. Finally add aggregate until consistent and fully mixed appropriately 90 seconds.

3. Application

Immediately after mixing, apply Mondéco Rapide. Spread and level the material with a pin rake onto the primed floor to the required thickness and to the designated grid line. Allow to cure.

4. Grinding and Finishing

After approximately 48 hours wet diamond grind and continue grinding with progressively finer diamonds. Clean thoroughly by vacuum. Suggested diamond grades are as follows:

1st Grind	30# metal diamond heads on planetary grinder.
Fine Grind	80# resin diamond heads on planetary grinder.
1st Polish	100# resin diamond heads on planetary grinder.
2nd Polish	200# resin diamond heads on planetary grinder.

Please refer to Flowcrete's Grinding and Finishing Guide for more details.

Application of Mondéco Grout

Thoroughly wash and vacuum clean the surface before applying Mondéco Grout ensuring that any pinholes do not contain grinding dust.

1. Application

Apply the Mondéco Grout as per Flowcrete's Grinding and Finishing Guide.

Application of Mondéco Sealer

Clean the surface with clean water and allow the screed to dry. Moisture and grinding dust must be removed prior to the application of Mondéco Sealer.

Apply the Mondéco Sealer as per Flowcrete's Grinding and Finishing Guide.

Trafficking

Allow to cure for a minimum of 24 hours at temperatures no less than 10°C before light trafficking.

Note

Any recommendation or suggestion relating to the use of the products made by Flowcrete Australia Pty Ltd., whether in its technical literature, or in response to a specific enquiry, or otherwise, is based upon data believed to be reliable, however the products and information are intended for use by Customers having requisite skill and know-how in the industry and therefore it is for the Customer to satisfy itself of the suitability of the products for its own particular use and it shall be deemed that the Customer has done so at its sole discretion and risk. When printed or saved externally, this document is uncontrolled and therefore may not be the latest version.

Additional Notes

1. Maximum overcoat time is 24 hours.
2. The product is fully hardened after approximately 2 hours.
3. The applied colours may differ from the examples shown.
4. Flowcrete assumes no responsibility for the application of incorrect colour.
5. This system is not UV stable and will discolour unless otherwise stated.
6. Do not cover or wash within the first 2 hours of curing.
7. This system should be installed at 3°C above the dew point.
8. A low temperature/high humidity environment can cause blooming issues.
9. Please ensure application temperature and RH limits are followed.
10. Wind or strong airflow may cause quick curing and drying of the system.
11. Ensure wind or strong airflow is eliminated during application, however adequate safety ventilation should still be followed.
12. Direct heat during application of the system can cause flash curing and potential delamination. Ensure you do not apply this system to substrates with temperatures exceeding 35°C.