



COMMERCIAL FLOORING

- ▶ Combine colour, performance and design to deliver a durable floor finish in commercial venues and retail environments.

Commercial Flooring Technical Profile



Flowcrete's Commercial Flooring range has been developed to deliver the ultimate in aesthetic appeal, without compromising on performance.

Available in a range of attractive finishes, from luxurious terrazzo and stone look systems to unique metallic surfaces, our seamless resin flooring solutions provide an appealing platform underfoot.

Durable formulations take heavy footfall and exposure to detergents and corrosive agents in their stride, ideally suited to busy public venues that might be subject to spillages and daily cleaning regimes.

Added benefits of impressive slip resistance, noise reduction and versatility result in a range of flooring solutions perfect for a variety of commercial environments.

Application Suitability



Retail Boutiques



Shopping Centres



Stadiums & Arenas



Airports & Terminals



Educational Facilities



Automotive Showrooms



Mondéco EP (8 mm)

A low odour, seamless resin-based decorative terrazzo floor finish which features Australian marble aggregates.

Typically used in high-end commercial developments, airports and shopping centres.



Flexible Design:

Offers extensive design potential to deliver the wow-factor underfoot.



Long Life Span:

Highly durable finish provides a long life cycle solution.



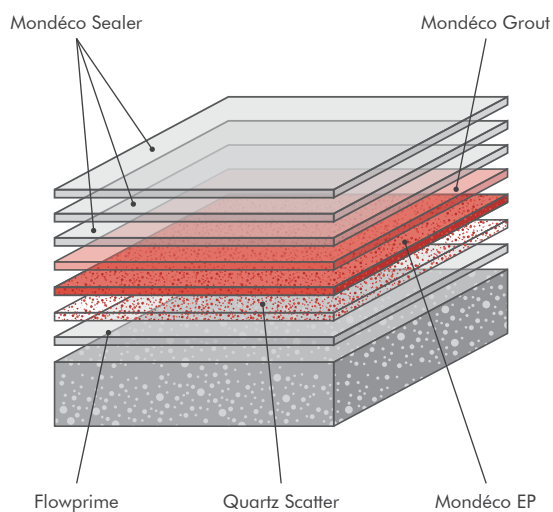
Chemical Resistant:

Resistant to a wide range of chemicals and cleaning solutions.



Low Odour:

Provides a low odour resin flooring solution.



Technical Profile

FIRE RESISTANCE	
AS/ISO 9239.1	CHF Value: $\geq 9.5 \text{ kW/m}^2$ Smoke Value: 266 % (Mean)
SLIP RESISTANCE	
Method described in AS4586-2013	Dry & Wet Rating is dependent on specification
TEMPERATURE RESISTANCE	
Tolerant of sustained temperatures up to 60°C	
WATER PERMEABILITY	
Karsten Test	Nil (Impermeable)
CHEMICAL RESISTANCE	
Contact Technical Department	
ABRASION RESISTANCE	
BS 8204-2	Grade AR2
COMPRESSIVE STRENGTH	
EN 13892-2	$> 55 \text{ N/mm}^2$
FLEXURAL STRENGTH	
EN 13892-2	$> 20 \text{ N/mm}^2$
TENSILE STRENGTH	
BS 6319	$> 10 \text{ N/mm}^2$
BOND STRENGTH	
ASTM D4541 (Pull-Off Test)	$> 1.5 \text{ MPa}^{**}$

SPEED OF CURE***	10°C	20°C	30°C
Light Traffic	24 hrs	20 hrs	16 hrs
Full Traffic	72 hrs	48 hrs	36 hrs
Full Chemical Cure	12 days	7 days	6 days

These figures are typical properties achieved in laboratory tests at 20°C and at 50% Relative Humidity.

*The slipperiness of flooring materials can change significantly, due to the installation process, after short periods of use, due to inappropriate maintenance, longer-term wear and/or surface contaminants (wet or dry). Textured systems are recommended to meet slip resistance value requirements for wet conditions and/or surface contaminants (wet or dry) — please contact our Technical Advisors for further details. **Assumes concrete compressive strength is greater than 25N/mm² ***For full speed of cure details, contact our Technical Advisors.



Mondéco Rapide (8 mm)

An innovative, rapid curing, seamless, resin-based decorative terrazzo floor finish which features Australian marble aggregates.

Typically used in high-end commercial developments, airports and shopping centres.



Flexible Design:

Offers extensive design potential to deliver the wow-factor underfoot.



Rapid Installation:

Quick curing properties reduce downtime during installation.



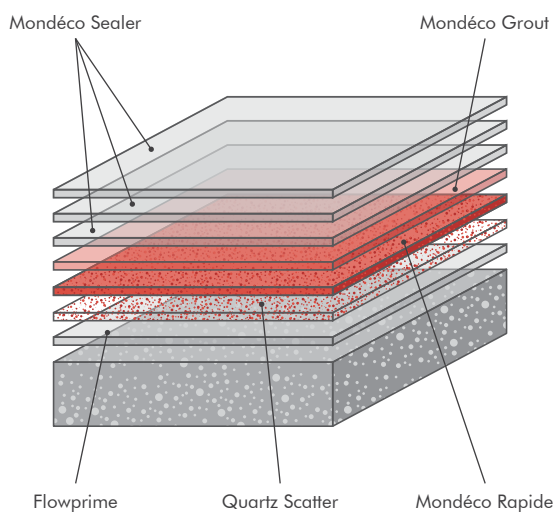
Versatile:

Can be overlaid onto tiles making it ideal for refurbishments.



Aesthetically Attractive:

Features local Australian marble chip aggregates that provide a luxury finish.



Technical Profile

FIRE RESISTANCE	
AS/ISO 9239.1	CHF Value: 5.7 kW/m ² Smoke Value: <4 % (Mean)
SLIP RESISTANCE	
Method described in AS4586-2013	Dry & Wet Rating is dependent on specification
TEMPERATURE RESISTANCE	
Tolerant of sustained temperatures up to 60°C	
WATER PERMEABILITY	
Karsten Test	Nil (Impermeable)
CHEMICAL RESISTANCE	
Contact Technical Department	
IMPACT STRENGTH	
ISO 6272-1	10 Nm
WEAR RESISTANCE	
EN 13892-4	Max. wear depth <5 μm
BOND STRENGTH	
ASTM D4541 (Pull-Off Test)	>1.5 MPa**

SPEED OF CURE***	
Light Traffic	1 hr
Full Traffic	2–3 hrs
Full Chemical Cure	2–3 hrs

These figures are typical properties achieved in laboratory tests at 20°C and at 50% Relative Humidity.

*The slipperiness of flooring materials can change significantly, due to the installation process, after short periods of use, due to inappropriate maintenance, longer-term wear and/or surface contaminants (wet or dry). Textured systems are recommended to meet slip resistance value requirements for wet conditions and/or surface contaminants (wet or dry) — please contact our Technical Advisors for further details. **Assumes concrete compressive strength is greater than 25N/mm² ***For full speed of cure details, contact our Technical Advisors.

Aussie Outback



Flowshield Stone (3–4 mm)

A highly decorative, UV, wear and chemical resistant resin-based flooring system featuring a decorative stone look blend.

Typically used in areas with heavy foot traffic including stadiums, arenas, malls and airports.



Decorative:

Featuring decorative coloured stone look blends within the resin matrix.



Easy to Clean:

Seamless and hygienic finish that is easy to clean and maintain.



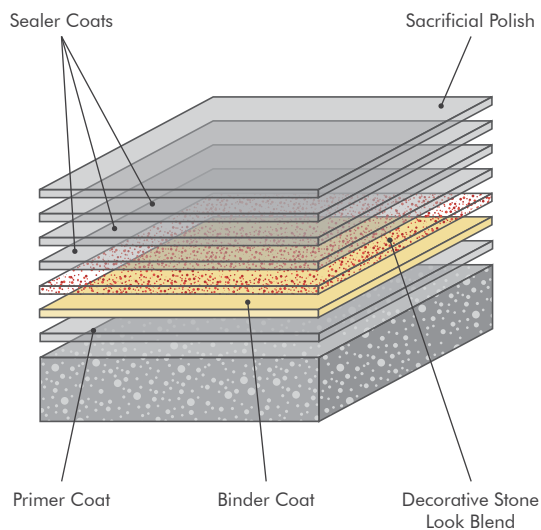
Chemical Resistant:

Provides resistance against a range of chemicals.



Durable:

Hard wearing and abrasion resistant against heavy foot and trolley traffic.



Technical Profile

FIRE RESISTANCE	
EN 13505-1	B _{FL} - s1
SLIP RESISTANCE	
Method described in AS4586-2013	Dry & Wet Rating is dependent on specification
TEMPERATURE RESISTANCE	
Tolerant of sustained temperatures up to 60°C	
WATER PERMEABILITY	
Karsten Test	Nil (Impermeable)
CHEMICAL RESISTANCE	
Contact Technical Department	
ABRASION RESISTANCE	
Taber Abrader BS8204:Part 2:2002	Class AR2 - Medium duty industrial and commercial
IMPACT RESISTANCE	
ISO 6272	1 kg weight > 1.8 m 2 kg weight > 1.5 m
FLEXURAL STRENGTH	
BS 6319	15 N/mm ²
TENSILE STRENGTH	
BS 6319	10 N/mm ²
BOND STRENGTH	
ASTM D4541 (Pull-Off Test)	> 1.5 MPa**

SPEED OF CURE***	10°C	20°C	30°C
Light Traffic	36 hrs	24 hrs	16 hrs
Full Traffic	48 hrs	36 hrs	24 hrs
Full Chemical Cure	12 days	7 days	6 days

These figures are typical properties achieved in laboratory tests at 20°C and at 50% Relative Humidity.

*The slipperiness of flooring materials can change significantly, due to the installation process, after short periods of use, due to inappropriate maintenance, longer-term wear and/or surface contaminants (wet or dry). Textured systems are recommended to meet slip resistance value requirements for wet conditions and/or surface contaminants (wet or dry) — please contact our Technical Advisors for further details. **Assumes concrete compressive strength is greater than 25N/mm² ***For full speed of cure details, contact our Technical Advisors.



Metallic Expressions (1.5–2 mm)

A highly decorative, hard wearing, advanced floor finish that provides a unique metallic finish that creates impact underfoot.

Typically used in retail stores, modern boutiques and hospitality venues.



Attractive:

Offers a decorative, metallic and multi-dimensional finish.



Bespoke Design:

Provides clients with diverse design potential.



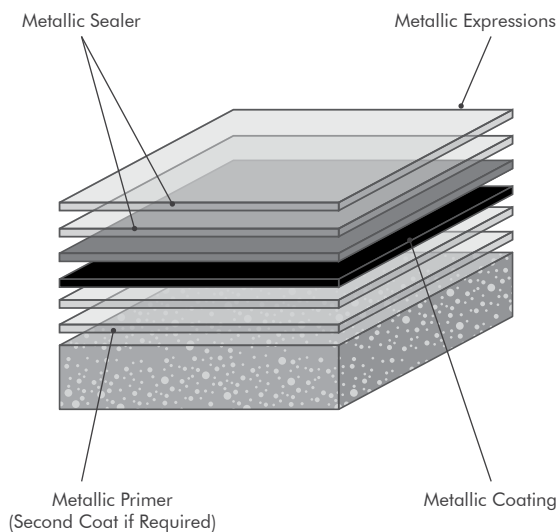
Easy to Clean:

Delivers a hygienic smooth surface that is easy to clean and maintain.



Durable:

Provides a durable and wear resistant platform underfoot.



Technical Profile

FIRE RESISTANCE	
EN 13505-1	B _{FL} - s1
SLIP RESISTANCE	
Method described in AS4586-2013	Dry & Wet Rating is dependent on specification
TEMPERATURE RESISTANCE	
Tolerant of sustained temperatures up to 60°C	
WATER PERMEABILITY	
Karsten Test	Nil (Impermeable)
CHEMICAL RESISTANCE	
Contact Technical Department	
ABRASION RESISTANCE	
Taber Abrader	50mg loss per 1000 cycles (1 kg load using CS17 wheels)
BOND STRENGTH	
ASTM D4541 (Pull-Off Test)	> 1.5 MPa**
SURFACE HARDNESS	
Koenig Hardness Test	180 secs.

SPEED OF CURE***	20°C	35°C
Light Traffic	19 hrs	15 hrs
Full Traffic	24 hrs	20 hrs
Full Chemical Cure	7 days	6 days

These figures are typical properties achieved in laboratory tests at 20°C and at 50% Relative Humidity.

*The slipperiness of flooring materials can change significantly, due to the installation process, after short periods of use, due to inappropriate maintenance, longer-term wear and/or surface contaminants (wet or dry). Textured systems are recommended to meet slip resistance value requirements for wet conditions and/or surface contaminants (wet or dry) — please contact our Technical Advisors for further details. **Assumes concrete compressive strength is greater than 25N/mm² *** Low relative humidity and good ventilation are pre-requisites to achieving the above drying times. For full speed of cure details, contact our Technical Advisors.



Flowcoat SRQ (2 mm)

A decorative epoxy resin-based flooring system featuring coloured quartz granules that provides a non-slip platform underfoot.

Typically used for internal environments which require a decorative non-slip finish.



Decorative:

Featuring decorative coloured quartz aggregates in a wide range of colours.



Slip Resistant:

Textured aggregates provide non slip traction underfoot.



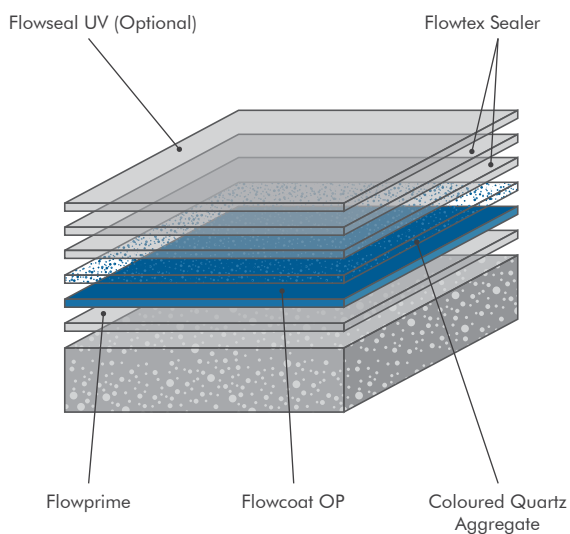
Durable:

Hard wearing, durable and abrasion resistant.



Aesthetic:

Decorative floor suited to both commercial and industrial facilities.



Technical Profile

FIRE RESISTANCE	
EN 13505-1	B _{FL} - s1
SLIP RESISTANCE	
Method described in AS4586-2013	Dry & Wet Rating is dependent on specification
TEMPERATURE RESISTANCE	
Tolerant up to 60°C	
WATER PERMEABILITY	
Karsten Test	Nil (Impermeable)
CHEMICAL RESISTANCE	
Contact Technical Department	
FLEXURAL STRENGTH	
EN 13892-2	15 N/mm ²
TENSILE STRENGTH	
BS 6319	10 N/mm ²
IMPACT RESISTANCE	
ISO 6272	1 kg weight > 1.8 m 2 kg weight > 1.5 m
BOND STRENGTH	
ASTM D4541 (Pull-Off Test)	> 1.5 MPa**
SURFACE HARDNESS	
Koenig Hardness Test	180 secs.

SPEED OF CURE***	10°C	20°C	30°C
Light Traffic	36 hrs	24 hrs	18 hrs
Full Traffic	72 hrs	48 hrs	36 hrs
Full Chemical Cure	12 days	7 days	6 days

These figures are typical properties achieved in laboratory tests at 20°C and at 50% Relative Humidity.

*The slipperiness of flooring materials can change significantly, due to the installation process, after short periods of use, due to inappropriate maintenance, longer-term wear and/or surface contaminants (wet or dry). Textured systems are recommended to meet slip resistance value requirements for wet conditions and/or surface contaminants (wet or dry) — please contact our Technical Advisors for further details. **Assumes concrete compressive strength is greater than 25N/mm² *** Low relative humidity and good ventilation are pre-requisites to achieving the above drying times. For full speed of cure details, contact our Technical Advisors.

Rustik + UV (6 mm)

A stone carpet system that uses colourful stone aggregates binded with a clear resin to provide a natural looking interior floor finish.

Suitable for car showrooms, retail stores, reception halls and commercial spaces.



Attractive:

A natural looking floor finish that is available in a range of colours.



UV Stable:

100% UV light stable and suitable for outdoor use.



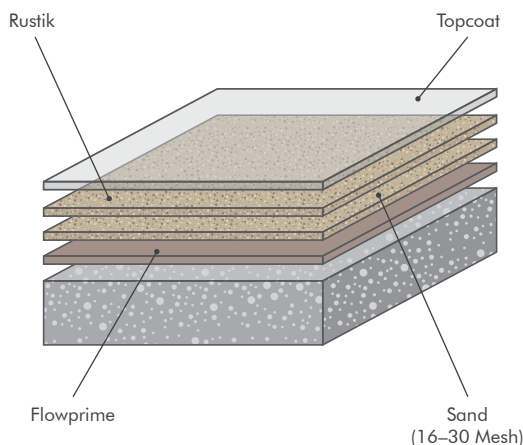
Hard Wearing:

Hard wearing & abrasion resistant, suitable for regular foot traffic.



Versatile:

Quick to install and can be applied to most substrates.



Technical Profile

SLIP RESISTANCE*	
Method described in AS4586-2013	Dry & Wet Rating is dependent on specification
THERMAL RESISTANCE	
Tolerant of sustained temperatures up to 60°C	
ABRASION RESISTANCE	
Taber Abrader BS8204:Part 2:2002	Class AR2 Medium duty industrial and commercial
COMPRESSIVE STRENGTH	
BS 6319	>30 N/mm ²
FLEXURAL STRENGTH	
BS 6319	10 N/mm ²
BOND STRENGTH	
ASTM D4541 (Pull-Off Test)	>1.5 MPa**
CHEMICAL RESISTANCE	
Contact Technical Department	
TOXICITY	
Taint free to sensitive foodstuffs.	

SPEED OF CURE**	10°C	20°C	30°C
Light Traffic	36 hrs	24 hrs	16 hrs
Full Traffic	72 hrs	48 hrs	36 hrs
Full Chemical Cure	12 days	7 days	6 days

These figures are typical properties achieved in laboratory tests at 20°C and at 50% Relative Humidity.

*The slipperiness of flooring materials can change significantly, due to the installation process, after short periods of use, due to inappropriate maintenance, longer-term wear and/or surface contaminants (wet or dry). Textured systems are recommended to meet slip resistance value requirements for wet conditions and/or surface contaminants (wet or dry) — please contact our Technical Advisors for further details. **Assumes concrete compressive strength is greater than 25N/mm² ***Low relative humidity and good ventilation are pre-requisites to achieving the above drying times. For full speed of cure details, contact our Technical Advisors.

** Cure times at temperatures between 0-30°C can be achieved by altering the quantity of catalyst used. For applications falling outside of this temperature range, please contact your local Flowcrete Technical Department.

Flowcoat Terrosso (1.5–3 mm)

Highly decorative, epoxy resin-based flooring systems featuring decorative flake blends and optional light non-slip aggregates for safety underfoot.

Available as a gloss or satin coating with a smooth or light non-slip finish.



Decorative:

Featuring decorative acrylic flake blends within the resin matrix.



Easy to Clean:

Seamless and hygienic finish is easy to clean and maintain.



Non Slip Available:

Available in smooth or light non-slip gloss or satin finish.



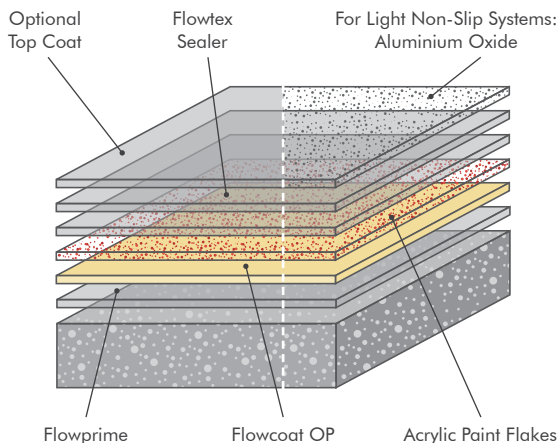
Durable:

Hard wearing, durable and abrasion resistant.



Chemical Resistant:

Provides resistance against a range of chemicals.



Technical Profile

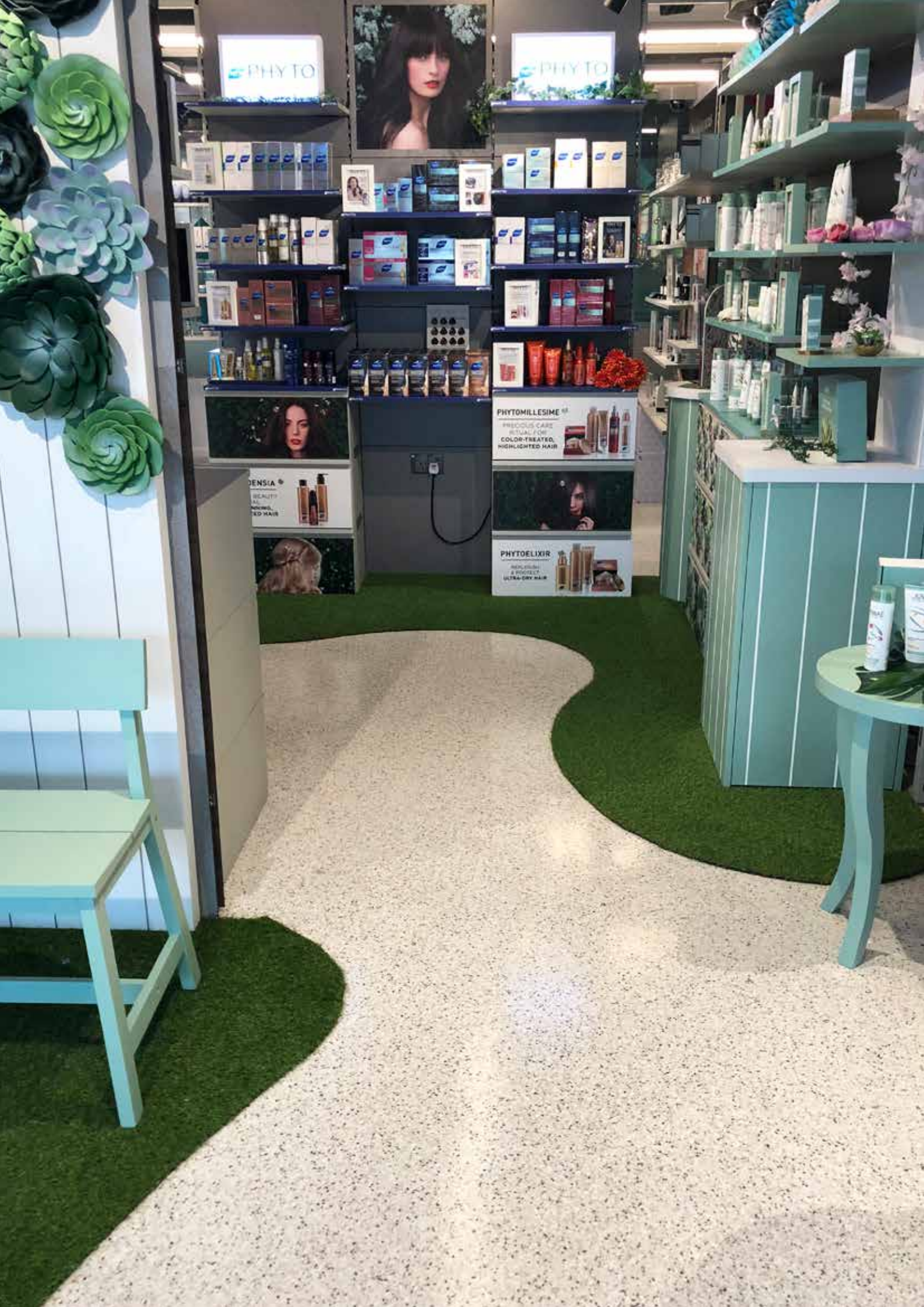
FIRE RESISTANCE	
EN 13505-1	B _{f1-s1}
SLIP RESISTANCE*	
Method described in AS4586-2013	Dry & Wet Rating is dependent on specification
THERMAL RESISTANCE	
Tolerant of sustained temperatures up to 60°C	
WATER PERMEABILITY	
Karsten Test	Nil (Impermeable)
ABRASION RESISTANCE	
Taber Abrader BS8204:Part 2:2002	Class AR2 Medium duty industrial and commercial
IMPACT RESISTANCE	
ISO 6272	1 kg weight > 1.8 m 2 kg weight > 1.5 m
FLEXURAL STRENGTH	
BS 6319	15 N/mm ²
TENSILE STRENGTH	
BS 6319	10 N/mm ²
BOND STRENGTH	
ASTM D4541 (Pull-Off Test)	> 1.5 MPa**
CHEMICAL RESISTANCE	
Contact Technical Department	

SPEED OF CURE**	10°C	20°C	30°C
Light Traffic	36 hrs	24 hrs	16 hrs
Full Traffic	72 hrs	48 hrs	36 hrs
Full Chemical Cure	12 days	7 days	6 days

These figures are typical properties achieved in laboratory tests at 20°C and at 50% Relative Humidity.

*The slipperiness of flooring materials can change significantly, due to the installation process, after short periods of use, due to inappropriate maintenance, longer-term wear and/or surface contaminants (wet or dry). Textured systems are recommended to meet slip resistance value requirements for wet conditions and/or surface contaminants (wet or dry) — please contact our Technical Advisors for further details. **Assumes concrete compressive strength is greater than 25N/mm² ***Low relative humidity and good ventilation are pre-requisites to achieving the above drying times. For full speed of cure details, contact our Technical Advisors.

** Cure times at temperatures between 0-30°C can be achieved by altering the quantity of catalyst used. For applications falling outside of this temperature range, please contact your local Flowcrete Technical Department.



PHYTO

PHYTO



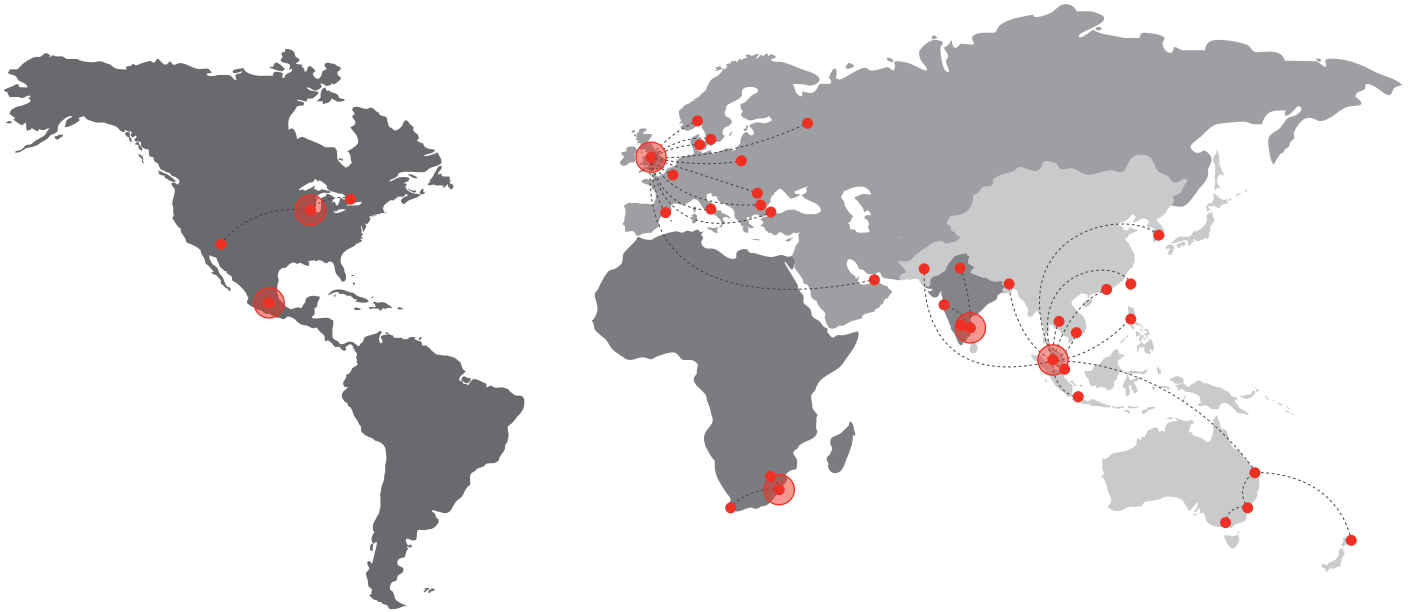
PHYTOMILLESIME
PRECIOUS CARE
SERIAL FOR
COLOR-TREATED,
HIGHLIGHTED HAIR

SENSIA
BEAUTY
FOR
DARK, RED HAIR



PHYTOELIXIR
REPLENISH & PROTECT
ULTRA-DRY HAIR





Flowcrete

World leader in seamless resin flooring solutions and other specialist coatings.

Africa

South Africa +27 31 701 0017 southafrica@flowcrete.com

Asia Pacific (APAC)

Australia	+61 7 3205 7115	australia@flowcrete.com
Bangladesh	+603 6277 9575	bangladesh@flowcrete.com
Hong Kong	+852 2795 0478	hongkong@flowcrete.com
Indonesia	+62 21 252 3201	indonesia@flowcrete.com
Korea	+60 3 6277 9575	korea@flowcrete.com
Malaysia	+60 3 6277 9575	asia@flowcrete.com
New Zealand	+64 7 541 1221	newzealand@flowcrete.com
Pakistan	+60 3 6277 9575	pakistan@flowcrete.com
Philippines	+63 2 834 6506	philippines@flowcrete.com
Singapore	+65 6848 7166	singapore@flowcrete.com
Taiwan	+60 3 6277 9575	taiwan@flowcrete.com
Thailand	+66 2539 3424	thailand@flowcrete.com
Vietnam	+84 28 6287 0846	vietnam@flowcrete.com

Europe & Middle East (EME)

Bulgaria	+359 898 61 58 31	bulgaria@flowcrete.com
Denmark	+46 435 40 01 10	denmark@flowcrete.com
France	+33 1 60 61 74 42	france@flowcrete.com
Italy	+39 339 4853258	italy@flowcrete.com
Norway	+47 6486 0830	norway@flowcrete.com
Poland	+48 22 879 8907	poland@flowcrete.com
Romania	+40 766 596 991	romania@flowcrete.com
Russia	+7 916 931 3513	russia@flowcrete.com
Spain	+34 937 07 0872	spain@flowcrete.com
Sweden	+46 435 40 01 10	sweden@flowcrete.com
Turkey	+90 212 2946570	turkey@flowcrete.com
UAE	+971 4 347 0460	uae@flowcrete.com
UK	+44 (0) 1270 753 000	uk@flowcrete.com

India

India +91 44 40176600 india@flowcrete.com

North America

Canada	+1 877-210-2444	canada@flowcrete.com
Mexico	+55 44 40 94 00	mexico@flowcrete.com
USA	+1 513-943-4225	americas@flowcrete.com

*Whilst every care has been taken to ensure that the information included in this document was accurate at the time of printing, Flowcrete reserves the right to change product specifications at any time without prior notice. The photographs and colours reproduced in this publication are within the constraints of the printing process and are not to be used for matching purposes. All photographs are used for approximate representation only and may not show the actual products on offer. E&OE.