

Flowfresh MF (4mm)

A chemical resistant, polyurethane resin floor system containing Polygiene®, with a smooth matte brightly coloured finish.

Typically used in dry to semi-wet areas such as food or pharmaceutical packaging zones.



Antimicrobial:

Contains Polygiene® additive that kills up to 99.9% of bacteria.



Chemical Resistant:

Protects against attack from corrosive ingredients and cleaning agents.



HACCP Certified:

HACCP Internationally certified for hygienic peace-of-mind.



Easy to Clean:

The self-smoothing finish is easy to maintain and sterilise.



Technical Profile

FIRE RESISTANCE

EN 13501-1	B _{FL} - s1
------------	----------------------

SLIP RESISTANCE

Method described in AS4586-2013	P1-P2
---------------------------------	-------

IMPACT RESISTANCE

EN ISO 6272	15Nm
-------------	------

TEMPERATURE RESISTANCE

From 0°C to 70°C

COEFFICIENT OF THERMAL EXPANSION

ASTM C531	5.70 x 10 ⁻⁵ °C ⁻¹
-----------	--

WATER PERMEABILITY

Karsten Test	Nil (impermeable)
--------------	-------------------

VAPOUR PERMEABILITY

ASTM E96:90	5g/m ² /24hrs (at 4mm thick)
-------------	---

ABRASION RESISTANCE

Taber Abrader	0.1g loss per 1000 cycles (1kg using CS17 wheels)
---------------	---

COMPRESSIVE STRENGTH

EN 13892-2	50N/mm ²
------------	---------------------

FLEXURAL STRENGTH

EN 13892-2	20 N/mm ²
------------	----------------------

TENSILE STRENGTH

BS6319	7N/mm ²
--------	--------------------

BOND STRENGTH

ASTM D4541 (Pull-Off Test)	> 1.5MPa
----------------------------	----------

VOC CONTENT

ASTM D2369-10: 2015	<140 g/L
---------------------	----------

SPEED OF CURE*

	10°C	20°C	30°C
Foot Traffic	36 h	24 h	12 h
Vehicular Traffic	72 h	48 h	24 h
Full Chemical Cure	10 d	7 d	6 d

*These figures are typical properties achieved in laboratory tests at 20°C and at 50% Relative Humidity. Textured systems are recommended to meet slip resistance value requirements for wet conditions and/or surface contaminants (wet/dry). Please contact our Technical Advisers for further details.



Terracotta



Serpentine



Bluebell



Light Grey Blue



Mushroom



Light Grey



Bridge Grey



Dark Grey



Straw

The applied colours may differ from the examples shown. For a full colour chart and samples, contact your local Flowcrete office.

Coving

Coving can form an integral part of the flooring system. It creates a sealed finish between the floor and wall joint. Please refer to Flowtex F1 Coving Mortar for further information.

Substrate Requirements

Concrete or screed substrate should be a minimum of 25 N/mm², free from laitance, dust and other contamination. Substrate should be dry to 95% RH as per ASTM F2170 (AS1884:2012). Slab on ground concrete must have an effective damp proof membrane in place.

Installation Service

The installation should be carried out by a qualified contractor with a documented quality assurance scheme. For details of our recommended contractors, contact your local Flowcrete office. Detailed application instructions are available upon request.

Environmental Considerations

The finished system is assessed as non-hazardous to health and the environment. The long service life and seamless surface reduce the need for repairs and maintenance. Environmental and health considerations are controlled during manufacture of the products by Flowcrete staff.

Aftercare, Cleaning & Maintenance

Clean regularly using a single or double headed rotary scrubber drier in conjunction with a mildly alkaline detergent. Please refer to Flowcrete's Cleaning & Maintenance Guide for further information.

Warranty

Flowcrete products are guaranteed against defective materials and manufacture and are sold subject to our standard 'Warranty, Terms and Conditions of Sale', copies of which can be obtained on request. Warranty does not cover suitability, fit for purpose or any consequential or related damages. Please review warranty in detail before installing the products.

Safety Precautions

Wear appropriate Personal Protective Equipment (PPE) including masks, gloves, eye protection and protective clothing during mixing and application. Ensure the working area is well ventilated and follow the appropriate Health and Safety guidelines applicable to the location where the application is undertaken.

Important

This specification assumes a concrete compressive strength greater than 25 N/mm², application and curing temperatures of 5–35°C, the presence of an effective damp proof membrane below substrate and concrete moisture content less than 95% RH. If moisture content is above 95% RH, please contact Flowcrete Australia.

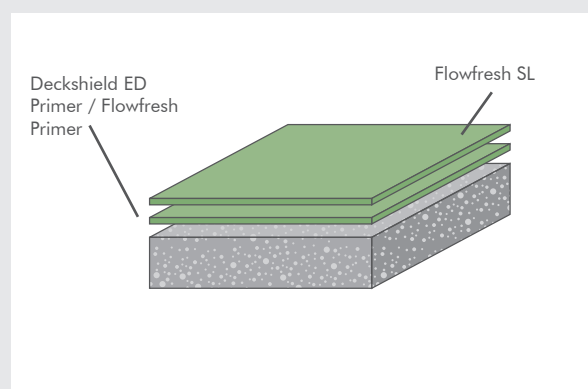
This specification must be read in conjunction with relevant product technical data sheets and the application of all materials is to be strictly in accordance with manufacturer's instructions..

Model Specification

System	Flowfresh MF
Finish	Matte
Thickness	4mm
Manufacturer	Tremco CPG Australia Pty Ltd
Contact	+ 61 7 3205 7115

Preparatory work and application in accordance with manufacturer's instructions.

System Design



Products Included In This System

Layer 1	Deckshield ED Primer / Flowfresh Primer
Layer 2	Flowfresh SL

Manufacturer Details

Manufacturer	Tremco CPG Australia Pty Ltd
Address	63 Radley Street
Suburb	Virginia
State	QLD
Postcode	4014
Telephone	+61 7 3205 7115
Email	specifications@tremco.com.au

Outline for Installation

Mechanically Prepare Substrate	
Apply Deckshield ED Primer/Flowfresh Primer	@ 0.2-0.4kg/m ²
For Porous Surfaces Only - Apply a 2nd Coat of Deckshield ED Primer/Flowfresh Primer.	
Apply Flowfresh SL	@ 7.2kg/m ²

Storage

Time	12 Months in Unopened Packs. If longer than 12 Months consult Flowcrete.
Temperature	Storage temperature between 5°C and 35°C.
Protection	Should be stored inside and protected from frost, weather, moisture, direct sunlight and contamination ingress.

Material Set-Up

Before commencing work ensure that your material is set-up by separating all components (e.g. Base A, Hardener B, Filler C etc.) to ensure that all material is correct. Check product labels and ensure there are equal amounts of product.

Site Set-Up

Before commencing work ensure that your site is set-up. Mark the floor according to the specification with masking tape or similar to clearly identify what area (m²) each unit will cover. If this is not achieved (greater or less consumption than the specified amount) immediately stop and contact Flowcrete.

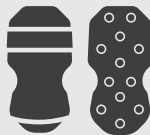
Application Equipment

The use of correct application equipment is critical as incorrect application tools can result in poor finishing and incorrect material consumption. Always test the application equipment prior to commencing work.

The following equipment is recommended for this application.



10-12mm Nap Roller
*Do not use Microfibre



Spike Shoes



Slow Speed Drill with
Helical Mixer Head



Squeegee



Pin Rake



Spike Roller



Steel Trowel

Surface Preparation

Concrete should be finished by steel trowel. Surface preparation is to be completed by totally enclosed shot blasting or coarse diamond grinding. All cementitious laitance must be removed to expose a sound substrate and provide a dry, dust free, open textured surface. All hard to reach areas and areas around the perimeter must be prepared using hand held preparation equipment.

Any damaged areas must be repaired with Flowtex F1 mortar. Consult Flowcrete prior to using an alternative repair mortar. Any rough or uneven areas must be made smooth with Flowcoat SC (Universal Resin Base A, Universal Hardener B, Sand/Flour). Consult Flowcrete prior to using an alternative epoxy scratch coat.

Application Temperature

The recommended material and substrate temperature is 5 - 35°C, but no less than 5°C. The temperature of the substrate should exceed the "dew point" by 3°C during application and hardening.

Temperatures should not fall below 5°C in the 24hrs after application.

Application / Pot Life

Ready-mixed product should be used within 20 minutes at a temperature of 20°C. At higher temperatures (or if left in bucket) the application time is shorter.

Decant mixed product into smaller quantities if applying small/detailed areas.

Application of Deckshield ED Primer/Flowfresh Primer

The substrate must be surface dry before the application of either Deckshield ED Primer or Flowfresh Primer.

1.A Mixing Deckshield ED Primer

Pack components are pre-weighed for optimum performance. We recommend that you do not split or proportion packs, however, if required this must be completed by weight using digital scales.

Stir Base A to re-disperse any settlement. Add Hardener B to the Base A container, and drain thoroughly.

Mix with a slow speed drill and helical spinner head for 90 seconds, taking care not to entrain air. Add Filler C to Base A container and mix for further 45 seconds until uniform. Add between 2 - 7% (if required depending on conditions) Xylene and mix for a further 30 seconds.

1.B Mixing Flowfresh Primer

Pack components are pre-weighed for optimum performance. We recommend that you do not split or proportion packs.

Stir Base A to re-disperse any settlement. Add Filler C to Base A and mix until uniform. Add Hardener B to the Base A container, and drain thoroughly. Mix with a slow speed drill and helical spinner head for 45 seconds, taking care not to entrain air. Add between 2 - 7% (if required depending on conditions) Xylene and mix for a further 30 seconds

2. Application

Immediately after mixing, apply the Deckshield ED Primer or Flowfresh Primer by squeegee and/or roller. Allow to cure for a minimum of 8 hours at 20°C.

Application of Flowfresh SL

The substrate must be surface dry before the application of Flowfresh SL.

Flowfresh SL must be applied within 24 hours at °20C following the application of Deckshield ED Primer or Flowfresh Primer.

1. Mixing

Pack components are pre-weighed for optimum performance. We recommend that you do not split or proportion packs, however, if supplied in bulk packaging this must be completed by weight using digital scales.

Stir Base A to re-disperse any settlement. Add Pigment and mix until uniform. Transfer to a mixing container. Add Hardener B to the mixing container, and drain thoroughly. Mix with a slow speed drill and helical spinner head for 45 seconds, taking care not to entrain air. Add Filler C and mix until uniform, approximately 60 seconds.

2. Application

Immediately after mixing, apply the Flowfresh SL by pin rake to the required thickness and finish with a steel trowel. Immediately after application spike roll the surface to assist with levelling the material and to release any entrapped air. Late spike rolling of the material can result in surface defects.

Cleaning

Tools and equipment can be cleaned with MEK/Acetone/Xylene. Please refer to SDS when using solvents.

Trafficking

Allow to cure for a minimum of 24 hours at temperatures no less than 20°C before foot traffic and 72 hours before vehicular traffic.

Note

When printed or saved externally, this document is uncontrolled and therefore may not be the latest version. Any recommendation or suggestion relating to the use of the products made by Tremco CPG Australia Pty Ltd., whether in its technical literature, or in response to a specific enquiry, or otherwise, is based upon data believed to be reliable, however the products and information are intended for use by Customers having requisite skill and know-how in the industry and therefore it is for the Customer to satisfy itself of the suitability of the products for its own particular use and it shall be deemed that the Customer has done so at its sole discretion and risk.

Additional Notes

1. Maximum overcoat time is 24 hours at 20°C.
2. The product has reached full cure after 7 days at 20°C.
3. The applied colours may differ from the examples shown.
4. Flowcrete assumes no responsibility for the application of incorrect colour.
5. It is the applicators responsibility to verify accuracy of colour prior to application. Flowcrete does not bear any responsibility or accept claims for incorrect colour after application of material.
6. This system is not UV stable and will discolour unless otherwise stated.
7. Do not cover or wash within the first 36 hours of curing at 20°C.
8. This system should be installed at 3°C above the dew point.
9. Please ensure application temperature and RH limits are followed.
10. Wind or strong airflow may cause quick curing and drying of the system.
11. Ensure wind or strong airflow is eliminated during application, however adequate safety ventilation should still be followed.
12. Direct heat during application of the system can cause flash curing and potential delamination. Ensure you do not apply this system to substrates with temperatures exceeding 35°C.